



Progress Report

Newsletter from the Lodge of Progress

March 2010

Featured this month:

Front Page

- **Provincial Grand Chaplain**
at our February meeting
- **RMBI Update**
Still time for you to do your bit.
- **Secretary's View**
Phil's annual round-up.

Back Page

- **Free Smarties**
But there's a catch !
- **What's On**
... this month.
- **Dates for your Diary**
Installation meeting
RMBI Dinner date and more.
- **... and Finally**
Anagram of the month.

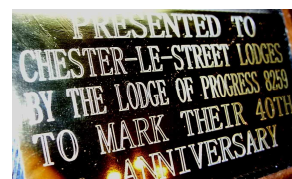
Lodge Ashlars are Formally Dedicated



Lodge of Progress was honoured in February with the visit of the Provincial Grand Chaplain, W. Bro Reverend Michael S. Snowball, who attended to dedicate our rough and smooth ashlar complete with pulley block system, commissioned as part of our 40th Anniversary Celebrations in 2009.

Lodge of Progress is donating these to be used by any Chester-le-Street Lodge. The Ashlar stones are made from locally quarried Sandstone and were supplied by a local Stone Mason from within the Durham area and presented to the Lodge by Bryan Kennedy. Owen Craggs, Jim Roberts, and Tom Sawyer all contributed to the project and W. Bro. Snowball thanked them accordingly.

Neptune Engineering Services Engineers scaled the tripod derrick poles and pulley blocks from a lodge photograph. The hard wooden pulley blocks and brass component parts were machined, then hand finished and assembled.



£3,250,000

2010 - RMBI Festival - FOUR Months remain.

We are getting closer !

£2, 625,000 raised to end of Jan.

£2,625,000

I know there are some of you who, for one reason or another, have still not yet been able to contribute to the Festival and would appeal to you now to do so. Take part in the 'Smarties' Exercise (see back page) or, if within your means, make a donation directly to our Charity Steward.

Please also come along and support the music and dance show which CHILDREN are staging to help OUR Masonic charity. It really is freemasonry in the community reversed.

See advert bottom left of this page.

Installation Arrangements.

Congratulations to Bro. Owen Craggs on his preferment to Master Elect for the Lodge of Progress. Owen will become the 42nd Master of our lodge.

Members should by now have reserved their seats, and those for their guests, for our installation meeting, enclosing remittance of £8 per head to cover the dining fee.

Phil Rann (Secretary)

Secretary's Viewpoint



Each month throughout the year the Master gives us his thoughts on how the Lodge is Progressing. This month it's my turn to let you see the secretary's view on what has been a busy year for us.

You could be forgiven for thinking that not much happens between meetings. We complete one ceremony and then the next thing you know we are back four weeks later to do another. I can tell you however that, during that intervening period – the lodge 'scribe' rarely rests !

Since I took on the role as secretary for Lodge of Progress, my goal has been to try and keep you as well informed as possible not only on what is happening in our lodge, but also in the other Lodges in Chester-le-Street and in the Province generally.

I started the "Progress Report" newsletter which I can tell you are circulated by email to Durham Freemasons all around the globe. It has been read in Australia by John Rutherford, in Africa by Steve Preston, in the US and Canada, in France and on certain Mediterranean Island locations by Brethren from other Chester lodges – most of whom have said that they find it a great

way of staying in touch with home.

Email has been a key tool in speeding up and improving on the communication methods we previously used. It has also helped us considerably by keeping down the costs of postage and printing, and thereby helping keep your fees down.

Province have now adopted email as their prime and preferred method of contact which considerably reduces the paperwork I receive. Many annual returns and reports are now computerised and our 'Adelphi' membership system held at Sunderland is, hopefully, now more accurate than previous systems ever were.

Can I therefore thank all of you who now receive lodge correspondence by email. Only EIGHT members are not on email – a great result. Please, in this connection, remember to tell me if your email address ever changes and please DO REPLY to mails where I ask for a reply. Chasing you is tedious !.

That said I have enjoyed my stint as secretary so far although I don't think anyone should hold such an office for more than five years. Accordingly we will be looking at making the roles of Assistant Secretary and Assistant DC non-progressive in future for succession planning. Every Master I have worked with has thrown me different challenges and I look forward to receiving any 'curved balls' that our new WM may pass my way!

Phil Rann (Secretary)

For one night only

The Magic of Music and Dance

in aid of the

RMBI 2010 Festival

Tuesday 13th April
at the Customs House,
South Shields - 7.30pm

The show is the idea of Mark Smith, of Nautilus Lodge and his wife Karen, to help raise money towards the Provincial 2010 RMBI Festival.

A mixture of song and dance by performers from across the North East region.

Featuring:

The Karen Shiel School of Dance,
Stephanie Peacock,
'The Mackem Mover'
Fiktion, and many more.

Visit website for more details:
www.2010show.webs.com
or Phone: 0191 454 1234

Progress Report Continued - from the Lodge of Progress



Smarties idea ! As part of the fun initiative – and to place emphasis on our traditions of Charitable giving – **Smarties 'Hexatubes'** were handed out to all members at our February meeting. As you would expect there is a catch ! Members are asked to firstly enjoy the usual contents, and then to use the empty tube as a store for 20 pence pieces. If you empty your pockets each night you'll be amazed how many 20p coins you can collect in a couple of months Thanks to Bro. Dosanjh for donating the Smarties for this project.

Members are then asked to return the tube to our Charity Steward, John Rutherford, at our April meeting with its **new** contents. John will then ask you to sign a 'gift aid' form and will forward your donation to Province who will claim back additional tax from the Inland Revenue, crediting the total then to our 2010 RMBI Festival appeal.

The membership of our lodge is now up to 60. Sadly not everyone is in a position to make regular charitable donations but most of us are. Do you realise that if we all exercised that promise we made to give to charity when we joined this organisation then with this exercise, each tube **could** hold £12.40. With the addition of gift aid your donation increases to £15.87 which can be credited to the individual and his lodge 2010 Festival contribution. Potentially we could raise nearly £1,000. Please give what you can.

THE MONTH AHEAD — MARCH 2010

The following is due to take place this coming month according to information that I have received. All 6.45 start unless stated.

March 2010	Lodge	Planned Business
Wednesday 3rd	Earl of Durham	First Degree
Wednesday 10th	Finchale Priory	Third Degree
Friday 12th	Eardulph	Second Degree
Wednesday 17th	Lumley	Lecture – David Johnson
Friday 19th	Lodge of Progress	Installation start time- 5.45
Wednesday 24th	Cestria	First Degree (Dem)

Many thanks to the brethren who assisted with Stewarding at the Earl of Durham installation last month which saw Bryan Kendall return to the chair after a gap of just a year! Earl of Durham will be stewarding for us at our installation this month.

PLEASE ENSURE THAT THE OWEN CRAGGS HAS YOUR DETAILS IF YOU ARE INTENDING TO COME TO OUR INSTALLATION FESTIVE BOARD. Tel: 0191 416 0468

Congratulations to Anthony Greenwell of Finchale Priory and his wife Gemma who have just produced a potential 'Lewis' for Finchale, in the form of their son named Roman Joseph Greenwell – born 18th Feb, & weighing in at a whopping 10lb 7ozs !

Dates for your Diaries.

Here are some important dates for you to add to your 2010 diary:

- ♦ **Our Installation Meeting 2010**
Friday 19th March 2010. 5.45 start.
LIMITED PLACES AVAILABLE (see above)!
- ♦ **Lodge Social – An Audience with Stephen Lee Garden**
Saturday 24th April at Chester-le-Street. Tickets £10 (to include buffet) available only from Phil Rann on 0191 389 0009.
- ♦ **Annual Promotions Meeting**
Saturday 26th June. Hartlepool and Seaton Carew.
- ♦ **RMBI Festival Dinner 2010 – Thursday, 23rd Sept.**
(Please note date has been changed)
Make a note in your diary now if you would like to attend this Gala Dinner. Bring your partners and let's celebrate our achievements. Even if we do not get to our target, we will have done very well in these difficult times.
- ♦ **Christmas Social**
Saturday 11th December, 2010
Our new Master has already planned a Christmas Social. A band have been booked and a good night should be had by all.
- **Details later in the year but mark your diaries now.**

Remember – Texas Lodge of Research come to Town

The first meeting of the Texas Lodge of Research in the UK is in Chester-le-Street on Saturday 13th March. Details from Dr. Alan Bell: abell@criticalstrategy.com

Lodge of Progress Presents:
An Evening with

Stephen Lee Garden

At Chester-le-Street Masonic Hall

Saturday 24th April, 2010.

7.00 for 7.30

Tickets £10

to include buffet

available from

Phil Rann on 0191 389 0009

Email: progress8259@gmail.com

LIMITED AVAILABILITY



And Finally.....

The answer to February's anagram, "**Relieving Hippos**" was a 'Grand gentleman in many ways. With a surname, alone that, if rearranged says "Sovereign" it HAD to be a GRAND LODGE OFFICER ... but nobody spotted it was our good friend Philip Grieveson.

For March, and for our new year, I have decided to give you the anagram of a Masonic Hall. (for example "SIN HOLD" would be 'Shildon.'

Now that you have the idea, where do you think "**Dunbar Door**" could be? Not quite a Harry Potter character but it has seen a transformation this last year! Please e-mail or post the answer to me and all the correct answers will be entered into a draw to be made at our next festive board for a liquid prize.

As you well know by now, our DC, Jonathan, is always looking for volunteers to either take on a piece of work, or to share a piece with another brother. Please come along to our next practice and offer your services. **All** officers are expected to attend Lodge Practices meetings.

Don't be shy !

Finally, only a handful of the 80 tickets remain for our April social. Over 55 have gone already. Contact me NOW if you want to go.

Phil Rann

W.Bro. Phil Rann - Secretary

Please keep your secretary informed of changes of address (including e-mail) and phone number.

Lodge of Progress (8259) Secretary - Tel: 0191 389 0009 - e-mail: progress8259@gmail.com